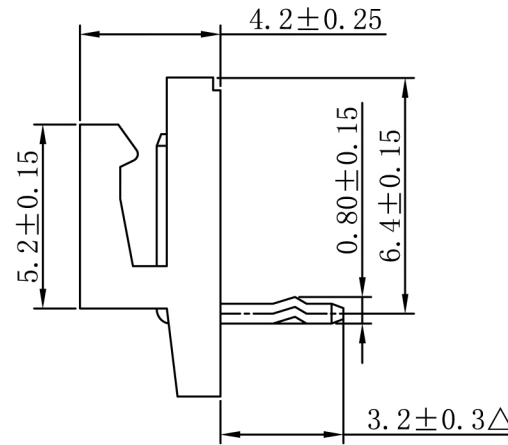
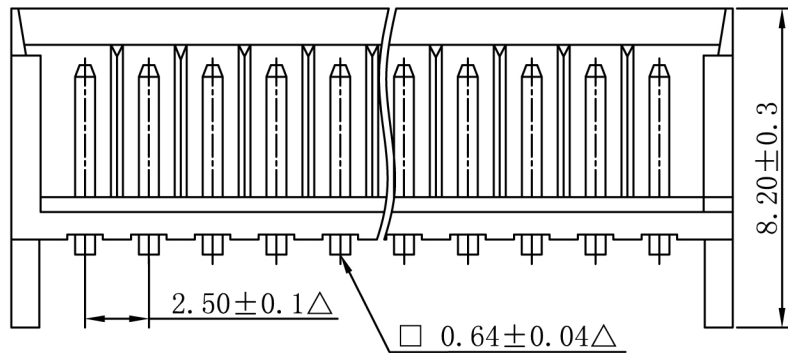


P. C. B. Hole Layout

Specifications

Current Rating	: 2.5A AC, DC
Voltage rating	: 250V AC, DC
Temperature range	: $-25^{\circ}\text{C} \sim +85^{\circ}\text{C}$
Contact resistance	: $10\text{m}\Omega$ Max
Insulation resistance	: $1000\text{M}\Omega$ Min
Withstanding voltage	: 800 VAC/minute
Finished	: Tin-plated
Housing Mateial	: PA-66, UL94 V-0
Color	: Ivory-White



Patr No.	Dimensions mm	
	A	B
CE-W250R-02	2.50	7.50
CE-W250R-03	5.00	10.0
CE-W250R-04	7.50	12.5
CE-W250R-05	10.0	15.0
CE-W250R-06	12.5	17.5
CE-W250R-07	15.0	20.0
CE-W250R-08	17.5	22.5
CE-W250R-09	20.0	25.0
CE-W250R-10	22.5	27.5
CE-W250R-11	25.0	30.0
CE-W250R-12	27.5	32.5
CE-W250R-13	30.0	35.0
CE-W250R-14	32.5	37.5
CE-W250R-15	35.0	40.0

DESCRIPTION(內容)
EH2.50mm Wafer 90°打K $\square=0.64$
(環保材料)

PART NO:
(料 號) CE-W250R-XX

DWG NO(圖號):

DRAWN(製圖):
周基華

CHECKED(確認):
陳雙軍

APPROVAL(核准):
師會營

GENERAL TOLERANCE:
(公差)

.0	± 0.20
.00	± 0.15
.000	± 0.10

SCALE(比例):
1:XX

REV:
A/4

UNIT:
mm

SIZE:
A4

SHEET:
1/1

REV	DESCRIPTION	DATE
1	Δ 此符號表示重點管控尺寸	2005.08.13
2	舊料號: CCB-W2501R-XX	2006.03.23
3	舊料號: CE-W2501R-XX	2007.03.03
4	增加產品顏色標注	2007.07.10